

ADA Compliance Web Map (Public)

The Louisiana Department of Transportation and Development (LDOTD) public facing map is located on the ADA compliance page of LDOTD's public facing website

(http://wwwsp.dotd.la.gov/Inside_LaDOTD/Divisions/Administration/Compliance/Pages/ADA_Prog.aspx). For users to access the map simply click on the [ADA Compliance Map](#) link to open the web map.

DOTD
LOUISIANA DEPARTMENT OF
TRANSPORTATION & DEVELOPMENT

DOTD A-Z | CONTACT US | SITE MAP | EMPLOYEE PORTAL

Search for Projects, Services, Manuals or Other Information

About DOTD | Employment | Maps / GIS | News & Events | My DOTD

RESIDENTS In My Community | BUSINESS Working With DOTD | GOVERNMENT State and Local Resources | INSIDE La DOTD

Home > Inside LaDOTD > Divisions > Administration > Compliance

Americans with Disabilities Act (ADA) Program

Louisiana Department of Transportation and Development has a responsibility to ensure that programs, services, activities and construction projects comply fully with the provisions of Title II of the Americans with Disabilities Act (Title II ADA) and Section 504 of the Rehabilitation Act of 1973 (Section 504). The core mission is to provide safe and efficient transportation facilities.

DISTRICT ADA LIAISON CONTACTS

DISTRICT	CONTACT	PHONE
DISTRICT 02	✉ CHRISTINA DURAND	504-376-0241
DISTRICT 03	✉ CHRIS LISSARD	337-262-6102
	✉ TEDDY BABIN	337-262-6104
DISTRICT 04	✉ PHILLIP STURDIVANT	318-549-8423
DISTRICT 05	✉ TODD JONES	318-476-4480
DISTRICT 07	✉ PAT LANDRY	337-437-9103
DISTRICT 08	✉ JONATHAN LACHNEY	318-561-5103
	✉ JASON RACHAL	318-561-5281
DISTRICT 58	✉ KEN FREE	318-412-3102
	✉ MATTHEW ZIECKER	
DISTRICT 61	✉ MICHAEL T. DONMYER	225-231-4103
DISTRICT 62	✉ JENNIFER BRANTON	985-375-0201

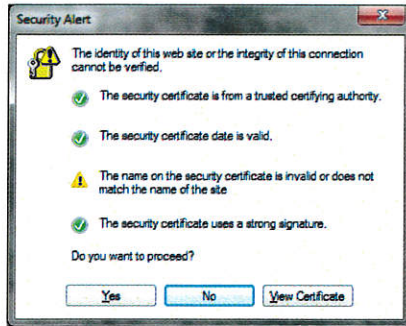
Type	Name	Modified	File Size
	ADA Notice Form	8/18/2017 9:18 AM	49 KB
	ADA question and answers fhwa-office of civil rights	8/18/2017 8:44 AM	133 KB
	Program Access Curb Ramp Request Form	8/18/2017 9:18 AM	287 KB
	Resurfacing Projects	8/18/2017 8:44 AM	2 KB
	ADA Compliance Map		

SEE SITE MAP

LA 440118 ADA COMPLIANCE | 1201 Capitol Access Road, Baton Rouge, LA, 70802 | Telephone: (225) 379-1232 | Email: dotdcs@la.gov

Utilizing the map

When the map opens the screen displays a map of Louisiana. A pop up may also display as shown below.



Click Yes (*the webpage is secure, but there is an issue with the certificate that we are working on*).

On the Map are a handful of buttons as illustrated below.

Find address or place- Top right of the map. You can use this to type in an address and zoom to the address.

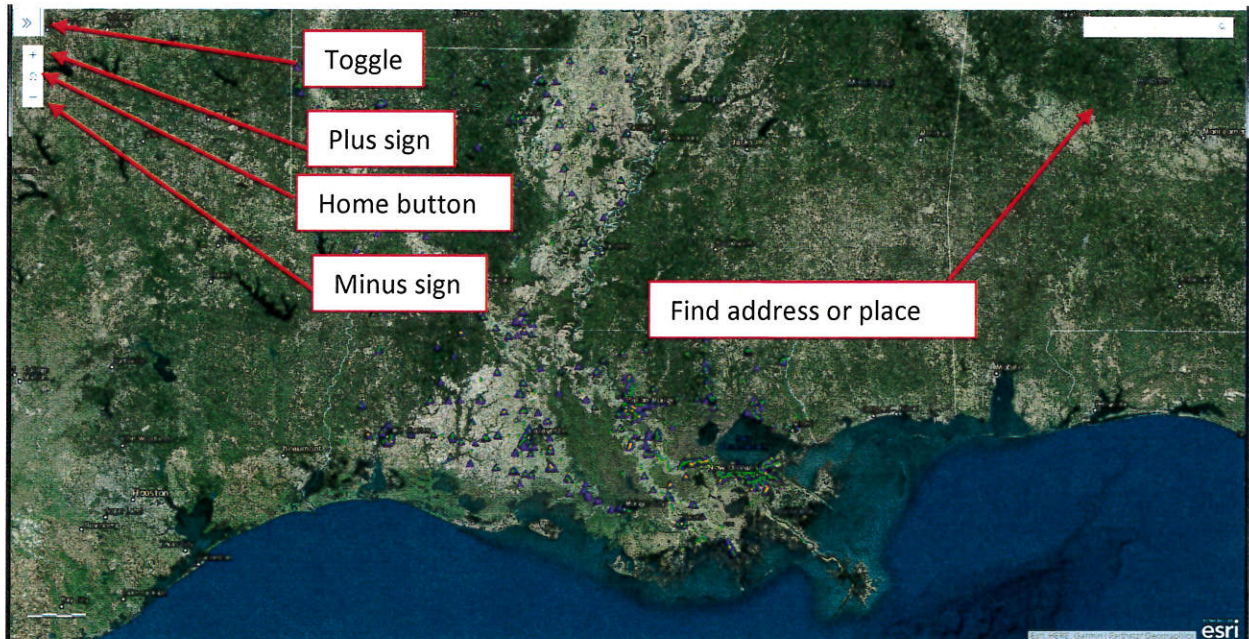
Plus sign (+) - Top left. Use this button to zoom in.

Home button- Top left. Use this to start over.

Minus sign (-) - Top left. Use this to zoom out.

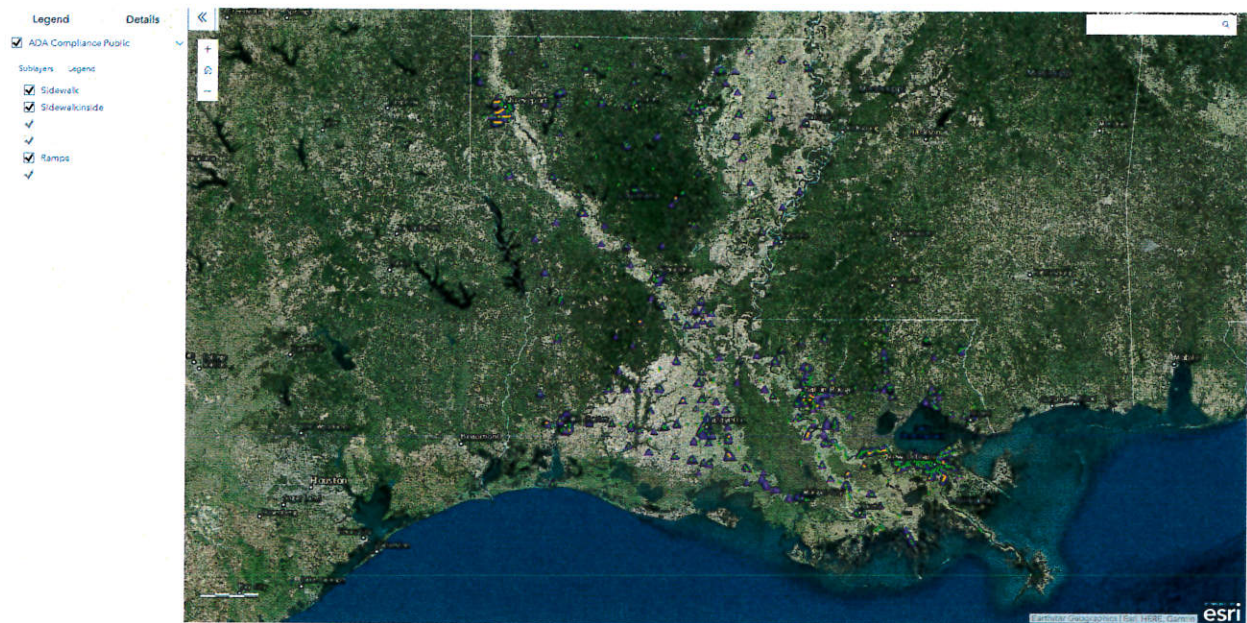
Alternatively, you can use the scroll wheel on your mouse to zoom in and out.

Toggle (>>) – this button opens the side panel.



Side Panel – Has two tabs, Legend and Details

Legend – Has two tabs also, Sublayers (a list of layers that can be turned on and off) and Legend (the layers symbology and a brief explanation of each; see below).



Legend Details

ADA Compliance Public

Sublayers Legend

Sidewalks (far)

Sidewalk

-  Compliant (as of last inspection)
-  Designed/Under Construction
-  Not Compliant

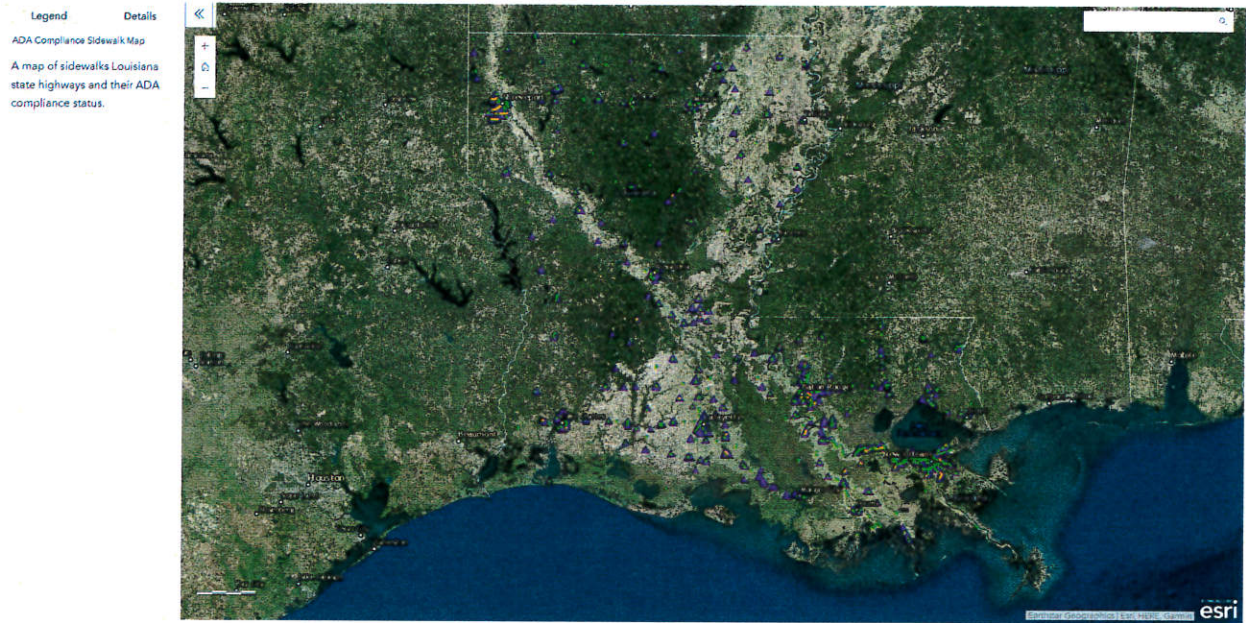
Sidewalk (one-way streets, non-mainline)

-  Compliant (as of last inspection)
-  Designed/Under Construction
-  Not Compliant

Ramps

-  Compliant (as of last inspection)
-  Designed/Under Construction
-  Not Compliant

Details – a brief description of the map.

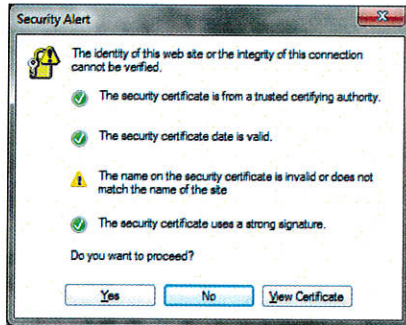


ADA Compliance Web Map (Internal)

The Louisiana Department of Transportation and Development (LDOTD) internal web map is located on the ADA compliance page of LDOTD's public facing website (http://ladotnet/administration/compliance/ADA_Page.aspx). For users to access the map simply click on the [ADA Compliance Map](#) link to open the web map.

Utilizing the map

When the map opens the screen displays a map of Louisiana. A pop up may also display as shown below.



Click Yes (*the webpage is secure, but there is an issue with the certificate that we are working on*).

On the Map are a handful of buttons as illustrated below.

Find address or place- Top right of the map. You can use this to type in an address and zoom to the address.

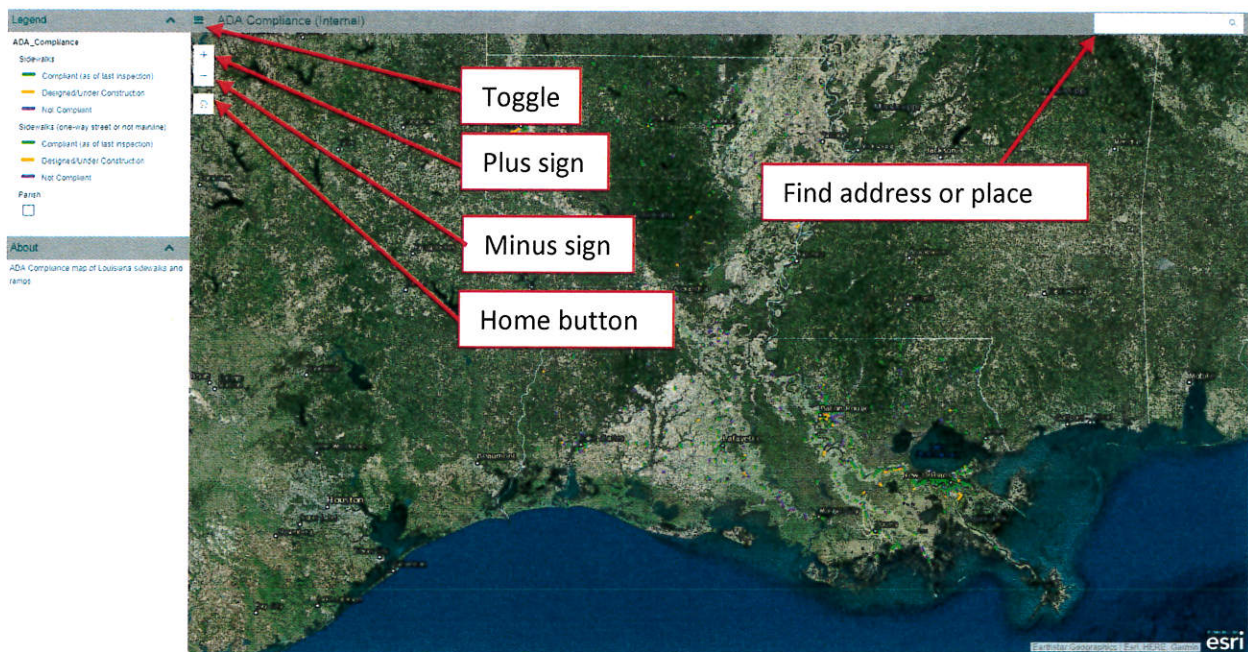
Plus sign (+) - Top left. Use this button to zoom in.

Home button- Top left. Use this to start over.

Minus sign (-) - Top left. Use this to zoom out.

Alternatively, you can use the scroll wheel on your mouse to zoom in and out.

Legend- Left side. The layers symbology and a brief explanation of each. The legend will expand or contract as you zoom in and out and different layers become visible.



Future plans

3-6 months- The highway projects planned for next year will be released sometime in the next month. When that happens the maps will be updated. Specifically, the Designed/Under Construction fields and symbology will be updated in both maps. In the internal map the Highway Priority field will also be updated.

6 months or more - In the near future the internal web map will be replaced with a web application that will allow them to edit the map/data as changes occur. They will also be able to add estimated construction dates (current year, 2-3 years, 5+ years, etc.). *Currently, edits to the data are performed by the Mapping staff of LDOTD at the request of the Compliance staff.*